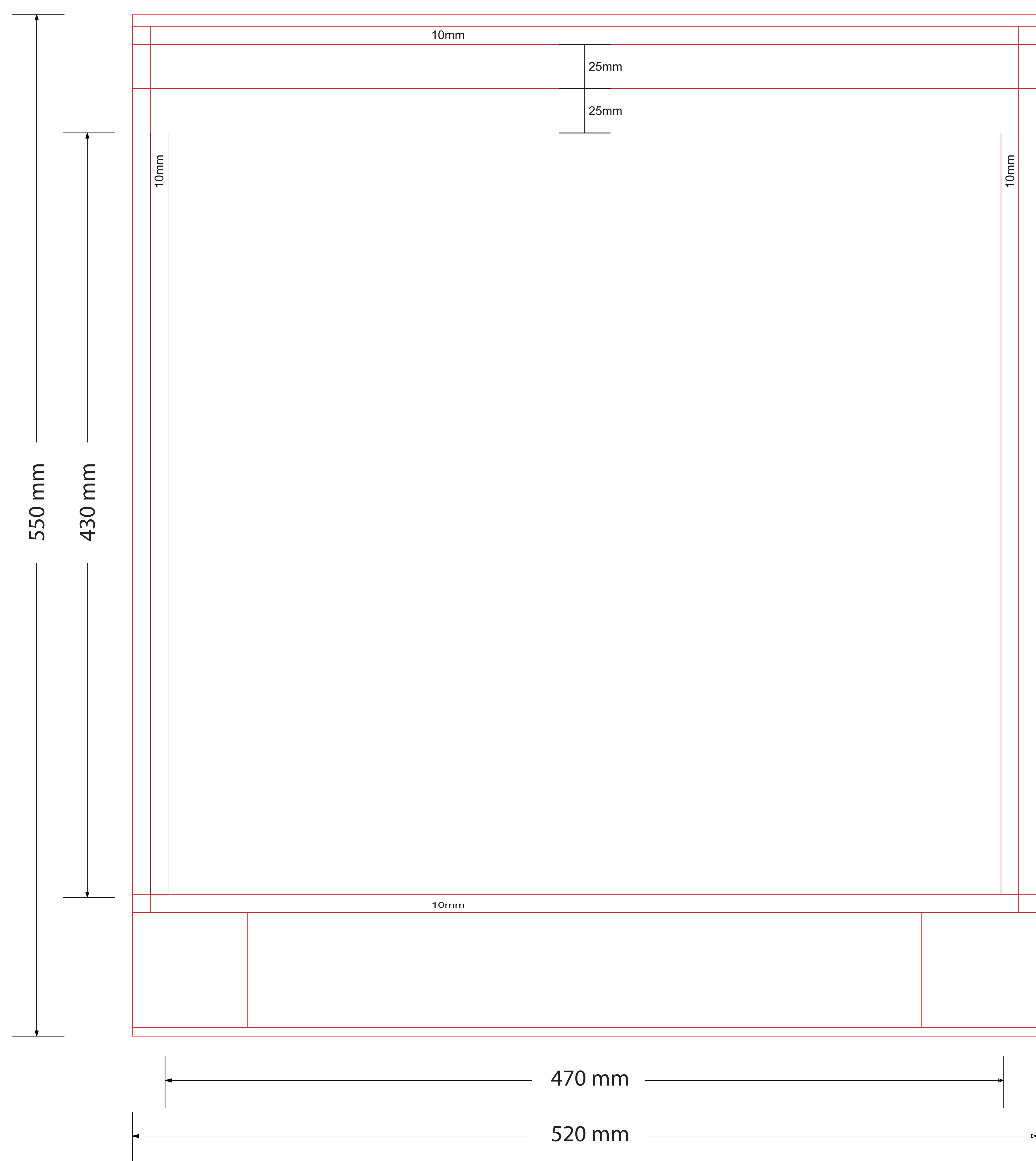
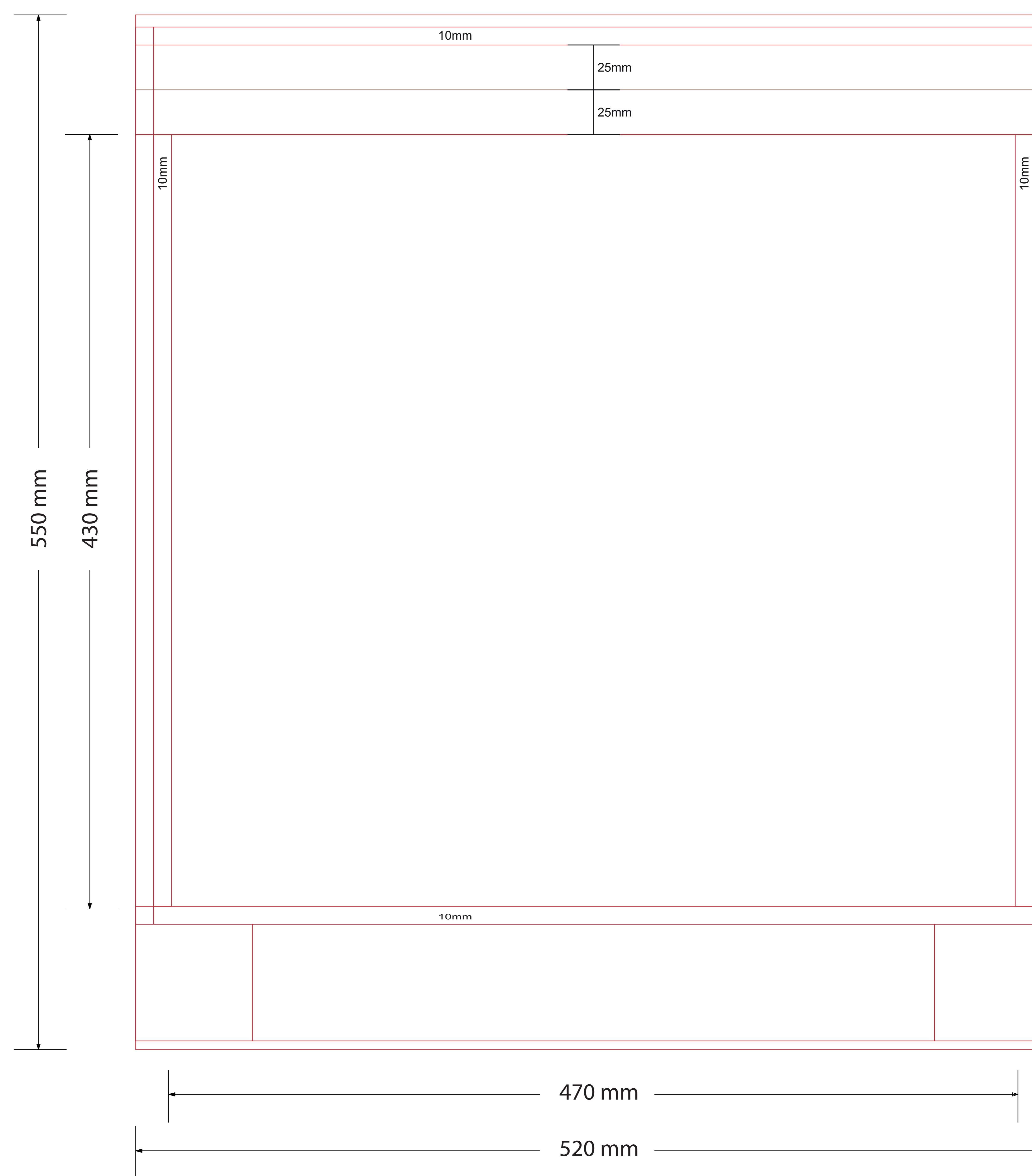


FRONT



BACK



SUBLIMATION BOTTLEBAG

Fashion L

SIZE WHEN ASSEMBLED

430mm x 470mm

height x width

BLEED

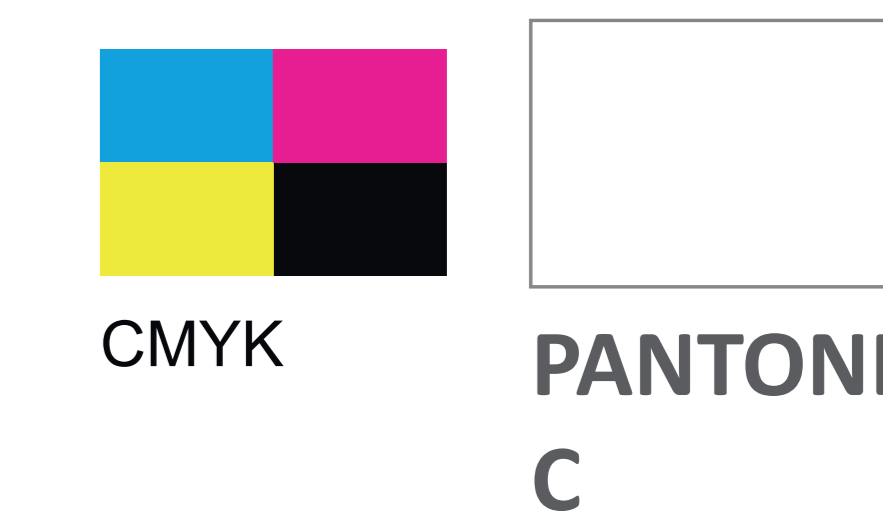
550mm x 520mm

height x width

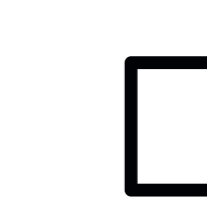
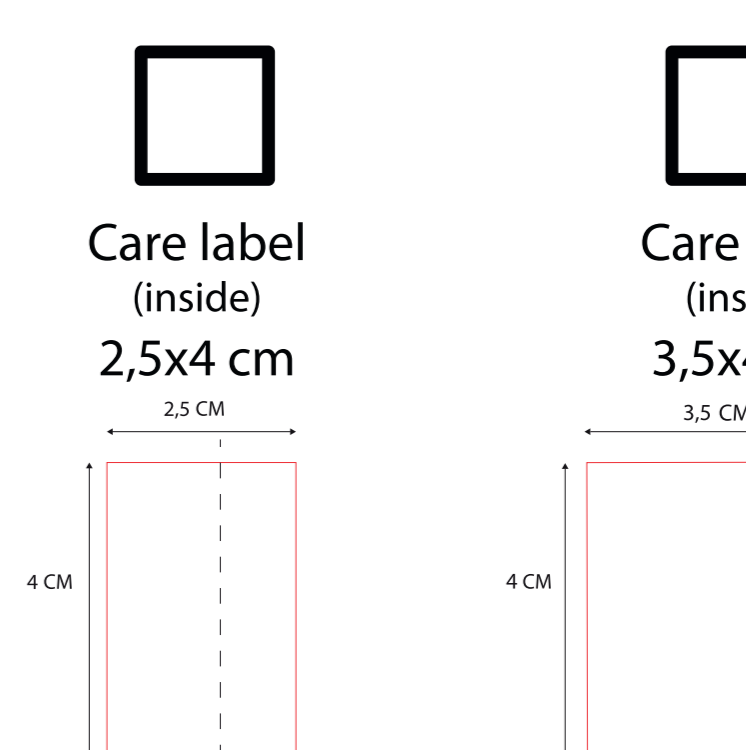
SAFE AREA

300mm x 380mm

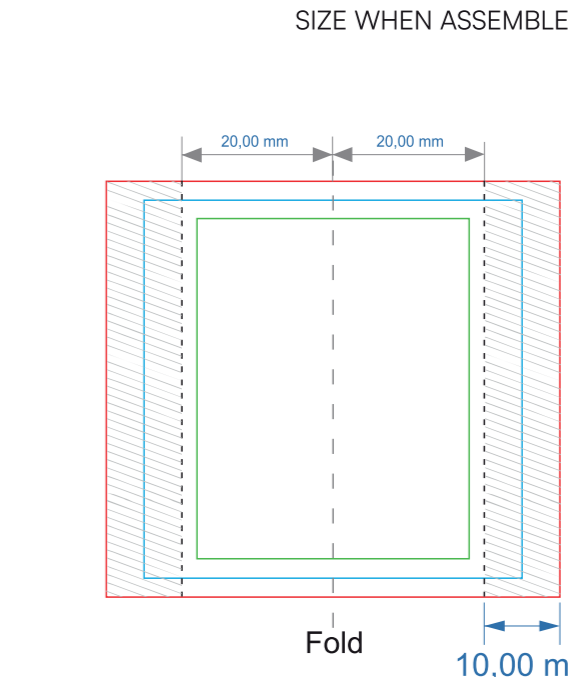
height x width



Choose one:



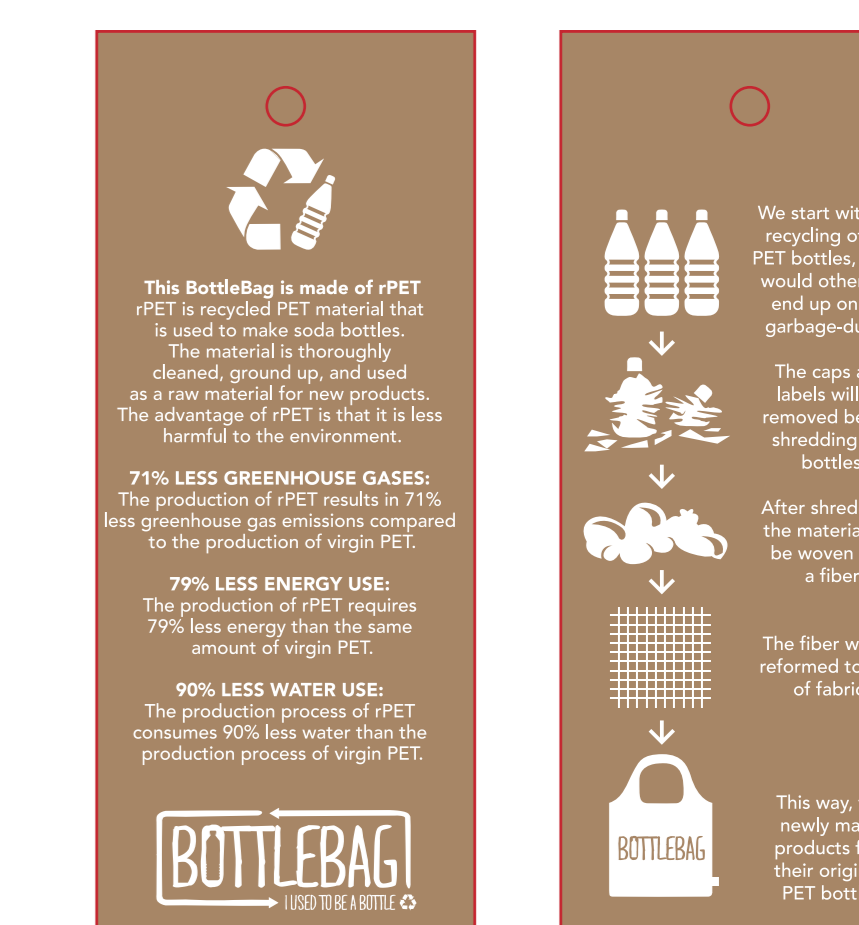
LABEL 20x50mm



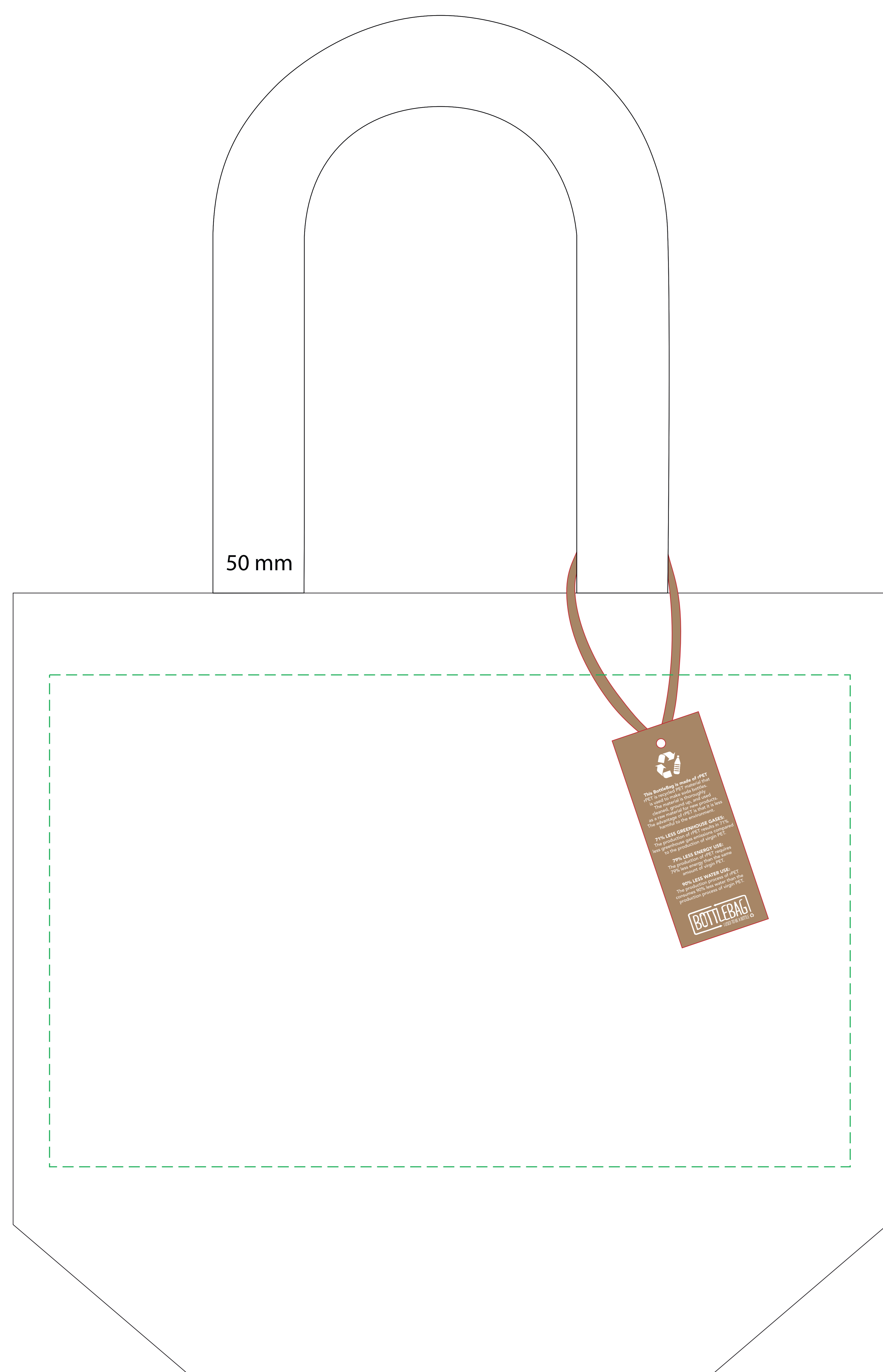
SEWING LINE
BLEEDS 60x55 mm
SAFE AREA 300x380 mm
UNVISIBLE AREA



Material Hangtag BottleBag
Hangtag BottleBag
Size 5x12 cm



HANDLES



To ensure the highest quality of service, please read carefully the following technical informations.

- 1) Tolerance of placing graphics on the material is +/- 10mm.
- 2) Despite many efforts, colours on fabrics will be always only similar to the colour of CMYK patterns.
- 3) If it's necessary to match any particular CMYK colour we advise to make a colour sample prior to the final approval of the order.
- 4) Any complaint about the colours will be taken under consideration only if the colour sample was ordered.
- 5) Minimum, readable size of fonts is 14 pt.
- 6) Minimum, resolution is 300 dpi
- 7) Minimum, line thickness is 0,5 mm
- 8) File format: pdf, eps, ai, cdr
- 9) Due to the sublimation process the bag dimensions may change up to 3% compared to the standard size.
- 10) All the graphics/logos outside the safe area may be cut or crossed by the stitching.

Placing the order or accepting this project means that you are familiar with presented technical information

SAFE AREA

LINES ARE TOO THIN
SMALL TEXT WILL BE UNREADABLE
EDGES WILL BE BLURRED BY COLOR FROM THE OTHER SIDE
STRIPES WILL NOT BE EQUAL
GRAPHICS WILL BE CUT

WHITE COLOR MAY BE BLURRED
DETAILS MAY BE INVISIBLE

